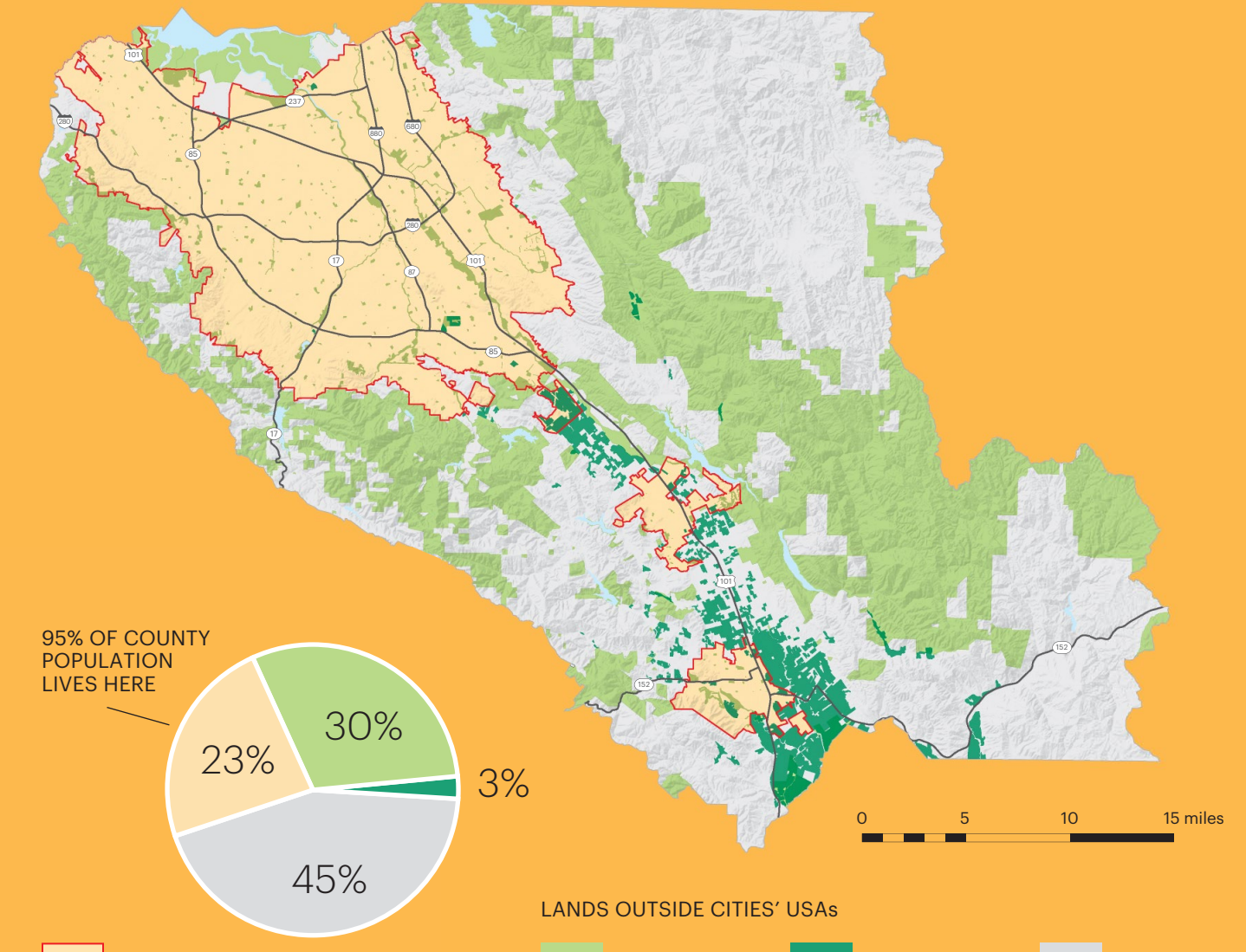


15 CITIES
 1.9M 2018 POPULATION
 1,305 SQUARE MILES

INTEGRATING GROWTH AND CONSERVATION

CAMPBELL	pop. 42,696	6 sq mi
CUPERTINO	pop. 60,091	11 sq mi
GILROY	pop. 55,615	17 sq mi
LOS ALTOS	pop. 31,361	7 sq mi
LOS ALTOS HILLS	pop. 8,568	9 sq mi
LOS GATOS	pop. 30,601	12 sq mi
MILPITAS	pop. 74,865	14 sq mi
MONTE SERENO	pop. 3,630	2 sq mi
MORGAN HILL	pop. 44,513	13 sq mi
MOUNTAIN VIEW	pop. 61,527	12 sq mi
PALO ALTO	pop. 69,721	26 sq mi
SAN JOSE	pop. 1,051,316	181 sq mi
SANTA CLARA	pop. 129,604	18 sq mi
SARATOGA	pop. 31,435	13 sq mi
SUNNYVALE	pop. 153,389	23 sq mi



95% OF COUNTY POPULATION LIVES HERE

23% 30% 3%

LAND WITHIN CITIES' USAs 302 SQ MI

PROTECTED OPEN SPACE OR CONSERVATION EASEMENTS 388 SQ MI

PRIME FARMLAND AND FARMLAND OF STATEWIDE / LOCAL IMPORTANCE 34 SQ MI

RURAL LANDS 581 SQ MI

SANTA CLARA COUNTY AND CITIES BOUNDARIES
 AUGUST 2019

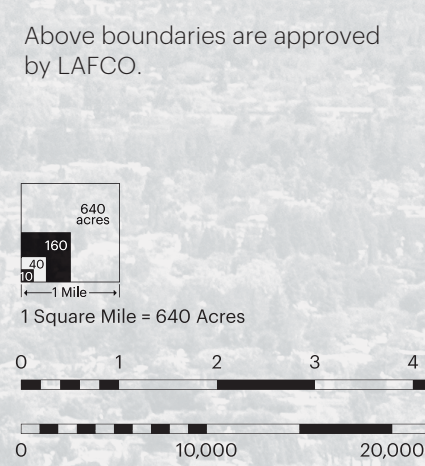
Santa Clara LAFCO is a state mandated independent local agency established to oversee the boundaries of cities and special districts in the county.

The mission of LAFCO is to promote sustainable growth and good governance in the county by:

- » Preserving agricultural lands and open space;
- » Curbing urban sprawl;
- » Encouraging efficient delivery of services;
- » Exploring and facilitating regional opportunities for fiscal sustainability; and
- » Promoting public accountability and transparency of local agencies.

URBAN SERVICE AREA
 Delineates areas currently annexed and provided with urban services; or areas that a city intends to annex in order to develop and provide urban services within five years.

SPHERE OF INFLUENCE
 Includes areas where the County and a city have shared interests in preserving non-urban levels of land use; does not necessarily indicate lands that a city will annex or provide with urban services.



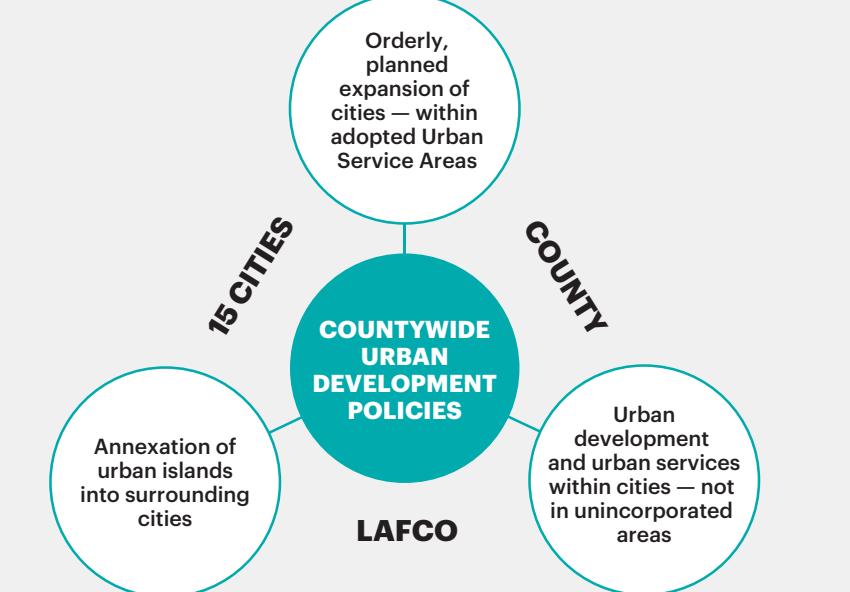
Local Agency Formation Commission of Santa Clara County



UNIQUE GROWTH MANAGEMENT FRAMEWORK

When LAFCO was created in 1963, Santa Clara County was in the throes of annexation wars as local agencies competed for land to meet the housing and business needs of a rapidly growing population. The disorderly growth of this period resulted in the conversion of productive farmland to urban and suburban land uses; and a sprawling patchwork of development that was difficult and costly to serve.

IN THE EARLY 1970s, LAFCO, THE COUNTY AND THE 15 CITIES JOINTLY DEVELOPED AND ADOPTED A COUNTYWIDE POLICY FRAMEWORK FOR MANAGING URBAN GROWTH.



The **Countywide Urban Development Policies** established important mutual commitments between the County and the 15 cities regarding the timing and location of urban development.

The **County** agreed to limit development within rural unincorporated areas to rural land uses and densities; and to no longer compete with the cities by approving new urban development in urban unincorporated islands.

The **cities** agreed to annex the urban unincorporated islands and plan for orderly urban development and expansion within Urban Service Area boundaries, which they proposed, and LAFCO adopted.

Charged with the responsibility to enforce these policies, **LAFCO** carefully evaluates proposed changes to the urban service area boundaries to ensure orderly, efficient and sustainable growth patterns into the future.

The consistent implementation of these unique policies over the past 45+ years has enabled more efficient growth patterns and continued economic prosperity in the county, while also facilitating the preservation of a vast network of open space lands in close proximity to urbanized areas and the sustained economic viability of farmland outside of the cities.

Learn more about how LAFCO works for the good of the whole county at:
SantaClaraLAFCO.org

This map includes GIS map data compiled from various sources. While deemed reliable, Santa Clara LAFCO assumes no liability. © 2018 Santa Clara LAFCO